

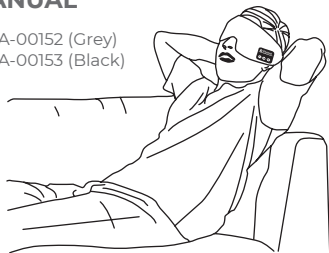
Simply Brands

Wireless Bluetooth Eye Mask

INSTRUCTION MANUAL

Model: Y-220 **SKU:** SBA-00152 (Grey)
SBA-00153 (Black)

Please retain for
future reference



What's included



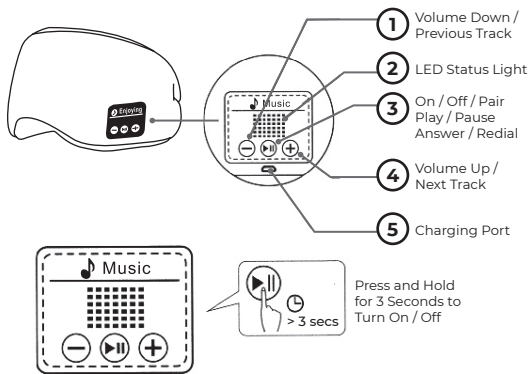
USB Cable



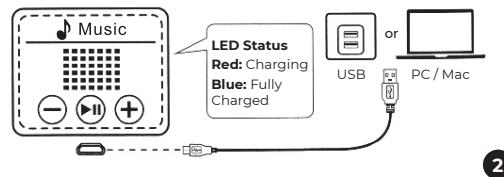
Instruction
Manual

1

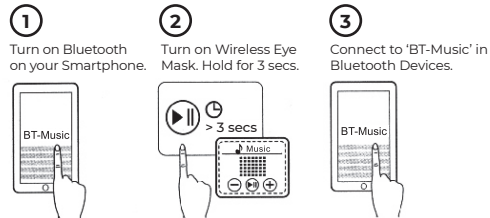
At a Glance – Switching the Eye Mask On/Off



Charging the Wireless Eye Mask



Pairing with your Bluetooth Device







LED Status Colour	Meaning
Rapidly flashing blue and red	Pending to be Paired
Slowly flashing blue	Connected to a Bluetooth Device

When turned ON, the Wireless Eye Mask will automatically connect to the last connected device if available. If no previously paired device is detected, it will enter into the pairing mode.

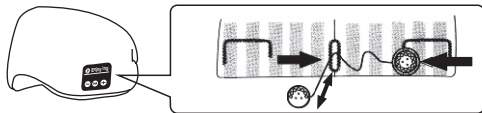
Control

Power On/Off	> 3 secs	Press and hold for 3 seconds
Play / Pause Music	x1	Press once when connected to a Bluetooth Device
Volume Up / Down		Press and hold during music playback

3

Next Track	 x1	Press once during music playback
Previous Track	 x1	Press once during music playback
Answer / End Phone Call	 x1	Press once when phone is ringing
Redial	 x2	Quickly press twice

Washing the Eye Mask



- Carefully slide out both ends of the speaker module from the eye mask using the pocket opening on the inside.
- Hand wash the eye mask with cold water, and air-dry.
- Reinstall the wireless speaker module back into the eye mask inside pocket opening, making sure the buttons are correctly aligned with the control panel interface.

4

CAUTION! Warnings and Safety Instructions

This product contains an internal rechargeable Lithium-Ion battery.

Please handle this product with care.

- NEVER put, store, or leave your product in or near sources of heat, in a pressurised container, or in a microwave oven.
- NEVER leave the product in an unventilated vehicle under direct sunlight.
- NEVER pierce, open, disassemble, or remove the battery or use in a corrosive environment.
- NEVER expose the product to temperatures over 60°C (140°F).
- ALWAYS confirm the ambient temperature is above 0°C and below 40°C during charging.
- ALWAYS keep the electronics and battery out of reach of infants and small children.

Failure to follow these instructions could cause the Lithium-Ion battery to leak alkaline solution or other electrolytic substances, catch on fire, or explode causing personal injuries and / or property damage. If the battery leaks and you come into contact with the leaked fluids, rinse thoroughly with water and seek medical attention immediately.

Optimising Rechargeable Battery Performance

Do not leave the product charging for more than two hours. Doing so runs the risk of overcharging the battery and shortening its total life span. If the product is not used for an extended period of time, please recharge the product before using it again. Unplug the charging cable when it's not in use.

Disposal of The Product

Because this product contains a battery and electronics, which are made of substances that are potentially dangerous to the environment and to human health, you should not dispose of this product with regular domestic rubbish.

Always dispose of used electronics containing a battery in accordance with the prevailing waste disposal regulations that are in force. If there are no local regulations concerning disposing battery electronics, please dispose of said items in a waste bin for electronics.

Many electronics retailers now recycle used batteries and other electronic components for free. Please check to see which electronics retailers are in your area that do recycle.

5

Download the instructions in other languages

Mode d'emploi en Français



Instrucciones en Español



Instrukcja w języku polskim



Simply Brands
www.simply-brands.com

Importer Name:
Simply Brands (Asia) Ltd

Importer Address:
Unit 04-05, 16th Floor, The Broadway No. 54-62
Lockhart Road, Wanchai, Hong Kong



Made in China

6