

Simply

2022.07.28

Vehicle Anti-Theft Alarm

SCA001

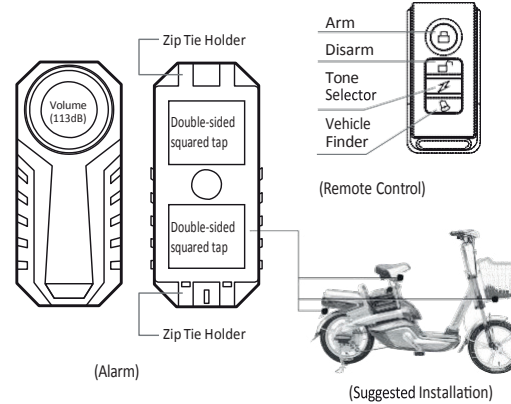
User Manual



- Triaxial Accelerometer Sensor with 7 stages of sensitivity for adjustment
- SOS Emergency Help Function with 6 selectable tones
- Alarm: 3 x AAA batteries included – providing approximately 1-3 months normal use or up to 6 months in standby mode. Remote Control: 27A 12V battery included
- Waterproof: IP65 Rated
- Wireless Range: 20-80M
- Volume: 113dB
- Operating Temperature: -20~60°C
- Operating Humidity: < 80%
- Storage Conditions: -30°C- +70°C

1

1. Structure

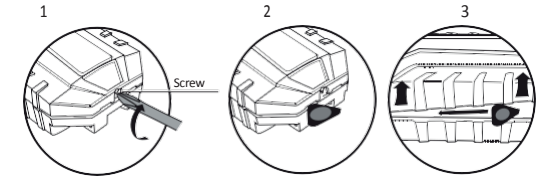


2

2. Instructions

2.1 Loading & replacing batteries

2.1.1 To replace the batteries remove the screw from the bottom, and then load 3 AAA alkaline batteries. If successful, the alarm should sound 3 beeps. Unload the batteries if the alarm isn't to be used for a long time.



3

2.2 Usages and Settings

ARM & DISARM Mode Settings

1. Press [] button on remote once, the alarm will sound, then a beep after 5s—it is now ARMED. If any vibration or movement is detected, the alarm will sound a warning beep for 2s. If the alarm is triggered again within 12s, it will sound the alarm for 30s in 6 ringtones automatically.

2. To silence the alarm, or exit ARM mode, press [] button on remote once. It will sound to acknowledge the alarm is now DISARMED.

Sensitivity Adjustment

1. There are 7 levels of sensitivity, the default setting is the highest. The levels are indicated by pitch of sound (highest pitch being the most sensitive).
2. Adjustment: Press and hold [] button, alarm will sound 2 or 3 times. The LED indicator should go off, and after a few seconds return brightly. Release your finger then press [] button once. It will sound, then press [] button again once, you will hear a different sound for every press, from highest to lowest (representing sensitivity levels). Once the desired sensitivity level has been reached, press [] button to exit the settings.

4

Select Tones

Press [] button to select tone, 6 tones in all (Invalid for ARM Mode)

Vehicle Finder function

Press [] button and the alarm will sound selected tone.

Program remote

Program the first remote: unload the batteries, then load them after around 30s. Press and hold [] until you hear a beep. Press [] button until 2 beeps sound, indicating the remote is paired.

5

SOS Function Setting

SOS function is off in default mode. Notification: SOS function will recognize the installation status of alarm. Please do not change direction after installation, or this function will be invalid.

Turn on SOS

Press and hold [] button. When LED indicator goes off and then displays brightly, press [] button. The alarm will sound a beep, then 5 beeps, the function is on. If 2 long beeps, setting has failed (keep the alarm still when setting).

Turn off SOS

Press and hold [] button. When LED indicator goes off and then displays brightly, press [] button. The alarm will sound 2 long beeps to indicate the function is off. Next, press [] button to exit the setting. Powering off the alarm will turn off SOS function too.

When the alarm is in disarm mode with SOS function on, tilt the vehicle at 45 degree angle, it will sound SOS tone automatically, straighten the vehicle will stop the sound.

6

Low Battery Indication

For alarm, please replace batteries if you hear “Du..Du” when arming/disarming.

For remote control, please replace battery if you notice that the LED indicator goes dark or wireless range becomes shorter.

Part of Simply Brands
simply-brands.com

Distributed by:
JRP Distribution Ltd, PO20 2FT
+44 (0)1903 750355
sales@jrpdistribution.co.uk



7