

Simply Brands

2 Person Inflatable Paddle Board

INSTRUCTION MANUAL

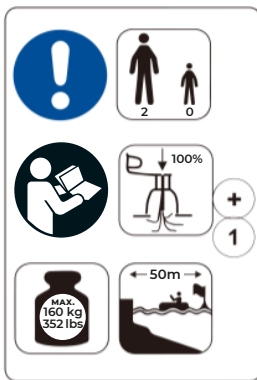
2 Person Inflatable Paddle Board

Blue: SBA-00202 / Red: SBA-00203 / Black: SBA-00204

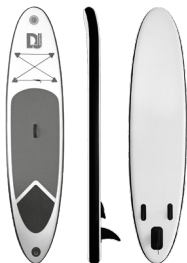
Batch Number: 004292



- Keep within 50m distance of shoreline
- Adult use only
- Do not use on white water, rapid current, large waves or high winds
- For use by strong swimmers only
- Does not provide protection against drowning



Please retain for future reference



1. Important Warnings



A Personal Flotation Device (PFD) is required for each user!



Do not dive or jump!



Do not leave the paddle board exposed under direct sunlight because it will significantly shorten its lifespan!



Keep away from fire!

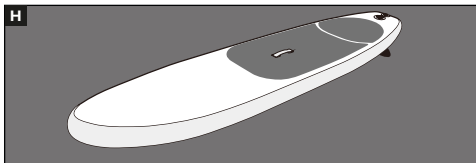
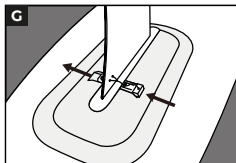
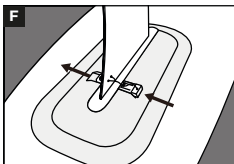
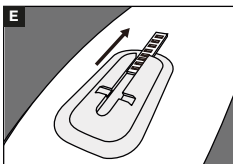
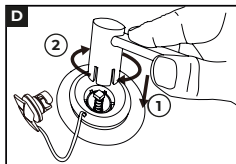
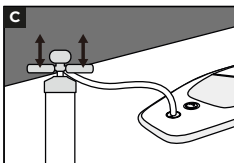
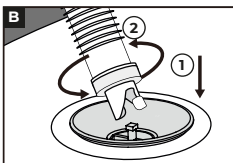
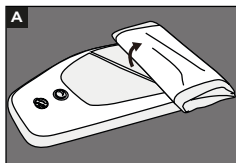


Beware of offshore winds and currents. Do not use in high winds and open water.

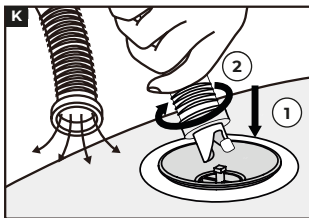
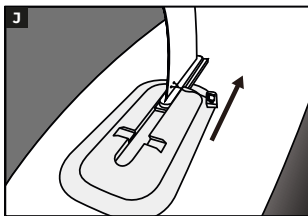
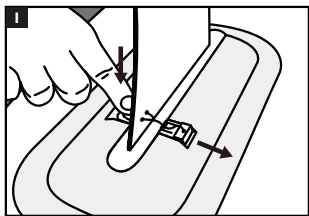


Do not use around sharp objects!

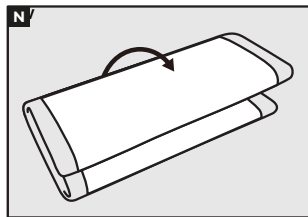
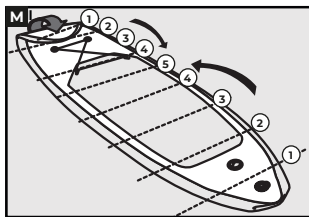
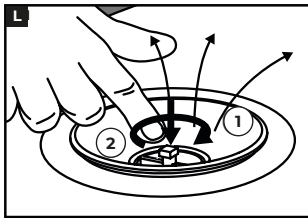
2. Installation and Inflation



3. Deflating and Storage



OR

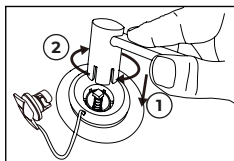
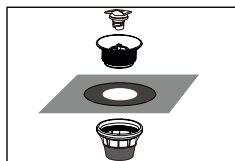
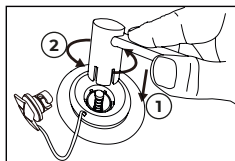
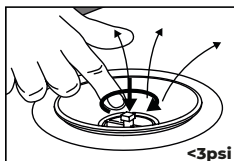
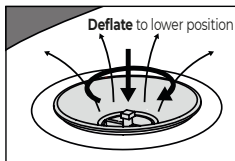
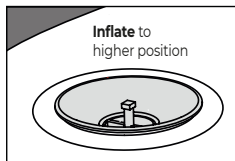


Clean your paddle board after using it to prevent avoidable and lasting damage from sand, salt water or prolonged sun exposure!

4. Replacing the Inflation Valve



If the valve is broken or leaky, follow the next steps further below to replace the inflation valve.



Accessories Checklist – 2 Person Paddle Board



- 1 x Storage Backpack
- 2 x Set of Adjustable Paddles
- 1 x Inflation Air Pump
- 1 x Foot Leash
- 1 x Repair Kit including Adhesive Glue

Simply Brands

Importer Name:

Simply Brands (Asia) Ltd

Importer Address:

Unit 04-05, 16th Floor, The Broadway No. 54-62
Lockhart Road, Wanchai, Hong Kong