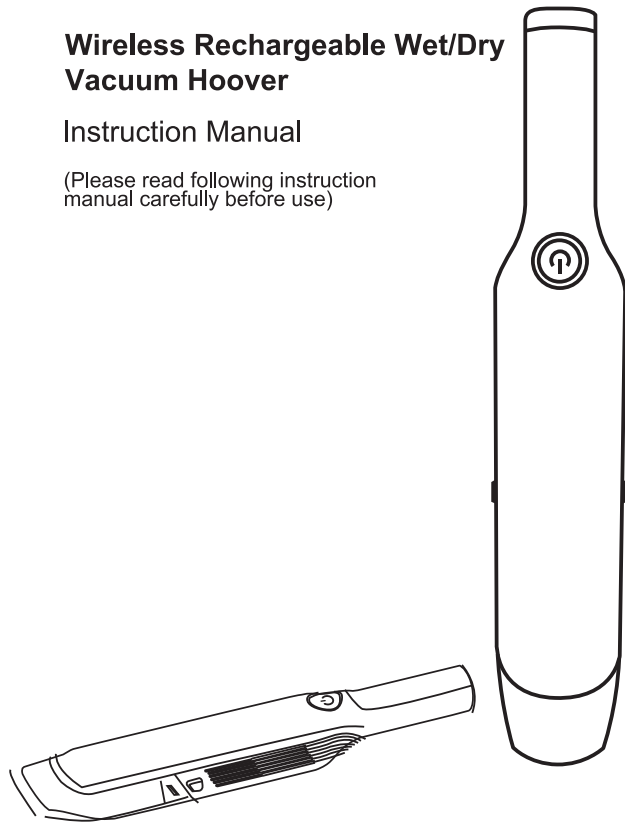


Wireless Rechargeable Wet/Dry Vacuum Hoover

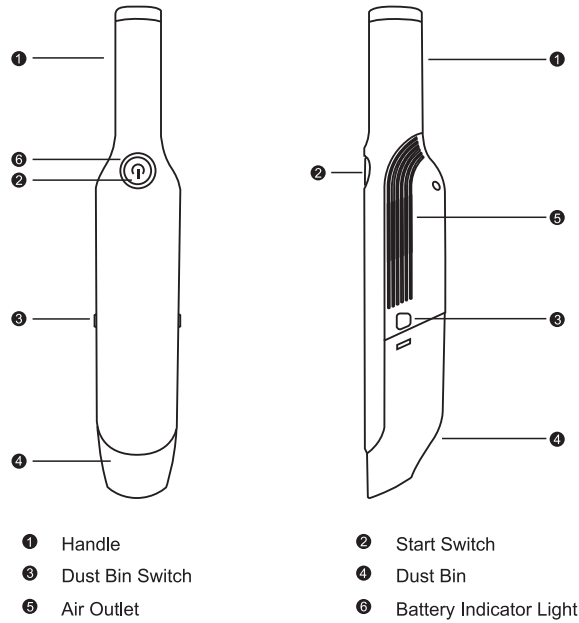
Instruction Manual

(Please read following instruction manual carefully before use)

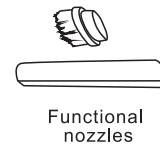
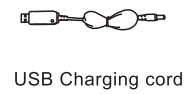


Part No: WWDH01

Product Description:



Accessories



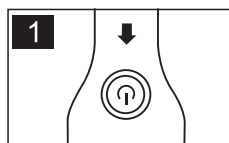
Product Parameters:

	Rechargeable
Working Voltage:	7.4V
Discharge Time:	25min
Battery Type:	18650

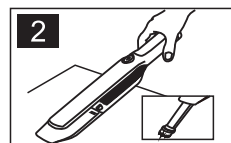
Warnings:

- Do not immerse the vacuum in water or other liquids;
- To avoid fire, explosion, or injury, please check the vacuum cleaner and charging cable before use.
- Do not operate or charge the vacuum with wet hands.
- Do not leave the vacuum cleaner turned on whilst unattended.
- Keep the vacuum cleaner and charging cable away from heated surfaces
- Do not cover the air intake whilst in operation.
- Do not vacuum combustionable materials, such as cigarette ends etc.
- Do not let children operate the vacuum cleaner or play with it as a toy. Please also take care when children are near the running vacuum.
- Do not use adapters above 2A for charging
- When the dust in the dust collection bin exceeds 50%, please empty it.

Usage Method:



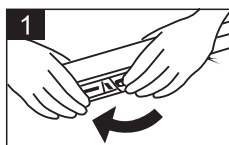
Long press the power switch to wake up the vacuum cleaner and turn on.



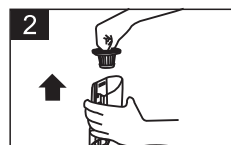
Align the suction port of the running machine to the surface of the object to be cleaned for optimal suction. Change different accessories according to different vacuuming requirements.

Cleaning and Maintenance:

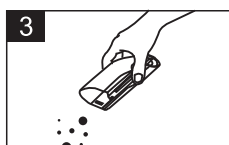
Please empty the dust bin regularly to prevent any loss of suction performance



Press the dust bin switch and take off the dust bin.



According to the direction of picture shown, hold the dust bin and take out the filter.



Pour out the trash from the dust bin.

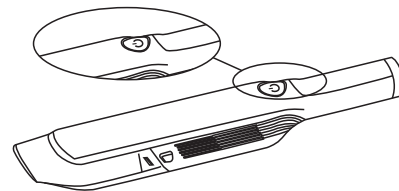


Wash the filter and dust bin, use it after drying. Please make sure that the filter is completely air-dried.

Rechargeable:

Two Gear Technology:

The Simply Vacuum Cleaner has two power modes. Press the power switch once for regular suction mode. This mode will clean light debris spills, dust etc on flat surfaces. Pressing the power switch twice will use the second mode, with enhanced suction. This is more suitable for cleaning heavier spills, hair on carpets or dust in hard-to-reach places.



Battery Charging:

Battery display status indication

In use



Blue indicator displayed

Charging



Red indicator flashing

Low power



Red indicator flashing

Charging Completed



Blue indicator on

FAQ:

- Vacuum cleaner does not work
- The battery needs to be charged
 - Hepa filter is blocked and needs cleaning
 - The vacuum cleaner cannot pick up debris or weak suction
 - Too much dust in the collection bin, needs emptying
 - Low battery and needs to be charged

Guarantee Notes:

Under the guarantee, an end user can register their product at www.simplybrands.com/guarantee and be covered for a free replacement if any product within the 12-month period has any defects in material or workmanship, up to a period of 1 year, when used in non-commercial applications, subject to the terms of the guarantee. For full details please visit www.simply-brands.com/guarantee. This guarantee is provided in addition to, and it will not affect the consumer's statutory rights provided under, the Consumer Rights Act 2015.