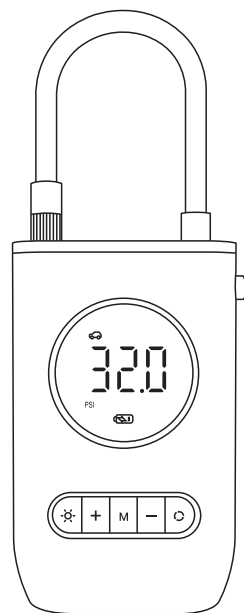


# Smart Cordless Inflator

## Instruction Manual



Thank you for purchasing  
Please read this Manual carefully prior to operation  
and keep it for further reference

## WARNING

- Do not allow Children to operate, NOT Toy.
- Do not use your Smart Cordless Inflator in rainy, hot, high-temperature, or high-pressure locations.
- NEVER put your Smart Cordless Inflator into water.
- Switch OFF Smart Cordless Inflator and let it cool for 30 minutes, after using 10 minutes continuously.
- Always slide side Power Switch to OFF after used.
- Do NOT cover the ventilation openings whilst running.
- Let the hose tube fully extended, Do NOT bend whilst running.

Please read Instruction Manual carefully prior to operation, improper use may result in product damage or personal injury, for which conditions sellers are not responsible.

## ATTENTION

To reduce the risk of electric shock, do not expose your Tire Inflator to rain. Store it indoors and away from fire.

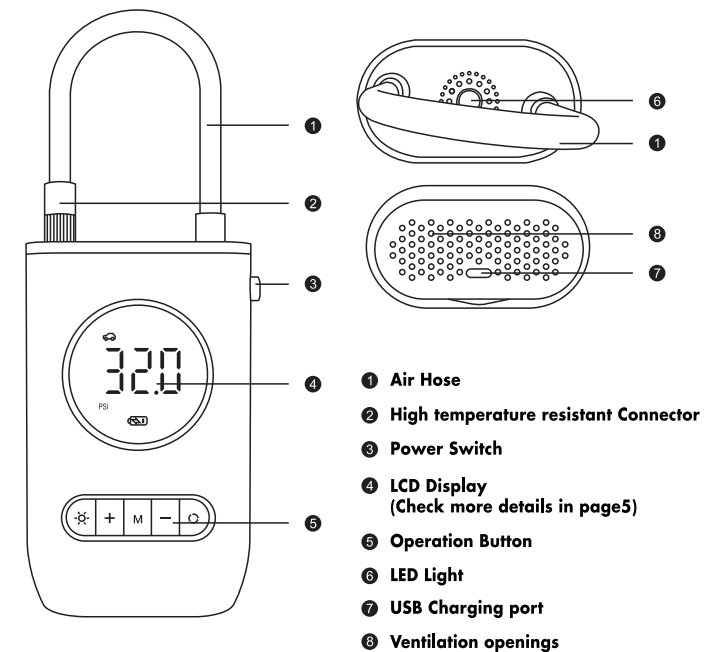
Attention:

1. This product will have slight fever in normal operation, which is a normal phenomenon.
2. To extend the service life of the air pump, continuous inflating of more than 10 minutes is not recommended. If a long time work is unavoidable, please take intermittent breaks to have your tire inflator cool down.
3. Please recycle where facilities exist. Check with your local authority for recycling advice.
4. NO repairable components inside, consult Technician if necessary.

## TECHNICAL SPECIFICATIONS

<b>Material</b>	ABS
<b>Dimension</b>	89x47.5x137mm
<b>Power</b>	50W
<b>Voltage</b>	7.4V
<b>Battery Capacity</b>	2000mAh*2

## LOCATION OF CONTROLS



## ACCESSORIES

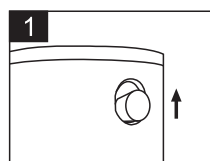


USB charging cable

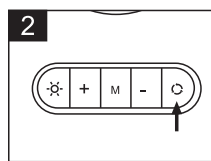


Nozzle Adapters

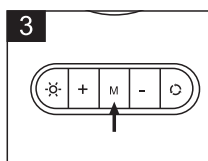
## OPERATION GUIDANCE



Slide the side Power Switch to ON position.



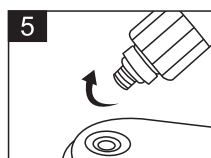
Press "C" button first to select Inflation mode among (4) Modes built-in "🚗 🏍️ 🚲 🏀" for Car, Motorcycle, Cycle and Balls.



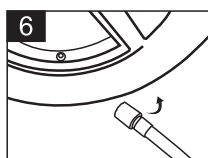
Pressing "M" over 3 seconds each time, to switch units among PSI, BAR, KPA or Kg/cm2



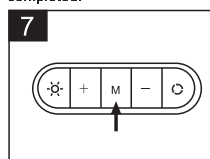
Press "+" or "-" to preset target pressure again, the LCD will be flashing to confirm the setting is completed.



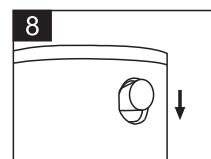
Make sure High temperature resistant Connector is securely mounted with Unit



Connect the other end of hose tube with tire valves (Select proper Nozzle Adapters if needed)



Press button "M" once to start inflating



Unit stops inflating automatically when programmed pressure reached. Slide the side Power Switch to OFF position

### (4) Inflation Modes built-in



Sedan Cars



Motorcycle

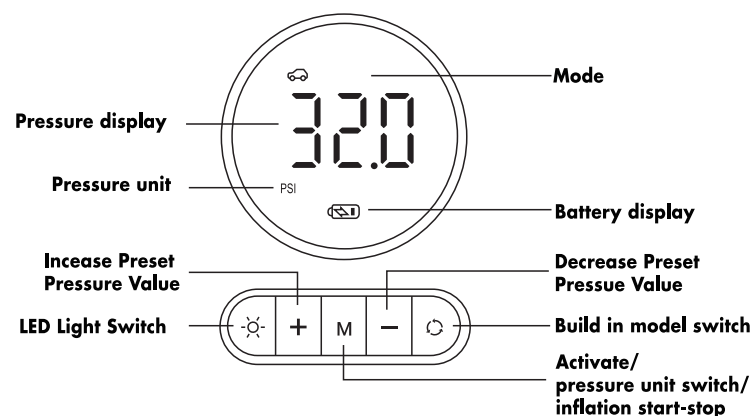


Cycle



Balls

## LCD DISPLAY ILLUSTRATING



- Press "C" button first to select Inflation mode among (4) Modes built-in "🚗 🏍️ 🚲 🏀" for Car, Motorcycle, Cycle and Balls.
- Pressing "M" over 3 seconds to switch units among PSI, BAR, KPA or Kg/cm2.
- Press "+" or "-" to program target pressure required, waiting for seconds, the LCD will be flashing to confirm the setting is completed.
- Make sure the programmed air pressure is appropriate with your Tires or Balls!
- Recharge the Unit when Battery icon keeps flashing, charging indicator turns from Red to Green after been fully recharged, use the provided charging cable only to recharge the device.
- Unit will cut off power automatically after 90seconds without any operations, press once the "M" button to wake up.

## GUARANTEE NOTE

Under the guarantee, an end user can register their product at [www.simplybrands.com/guarantee](http://www.simplybrands.com/guarantee) and be covered for a free replacement if any product within the 12-month period has any defects in material or workmanship, up to a period of 1 year, when used in non-commercial applications, subject to the terms of the guarantee. For full details please visit [www.simply-brands.com/guarantee](http://www.simply-brands.com/guarantee). This guarantee is provided in addition to, and it will not affect the consumer's statutory rights provided under, the Consumer Rights Act 2015.

